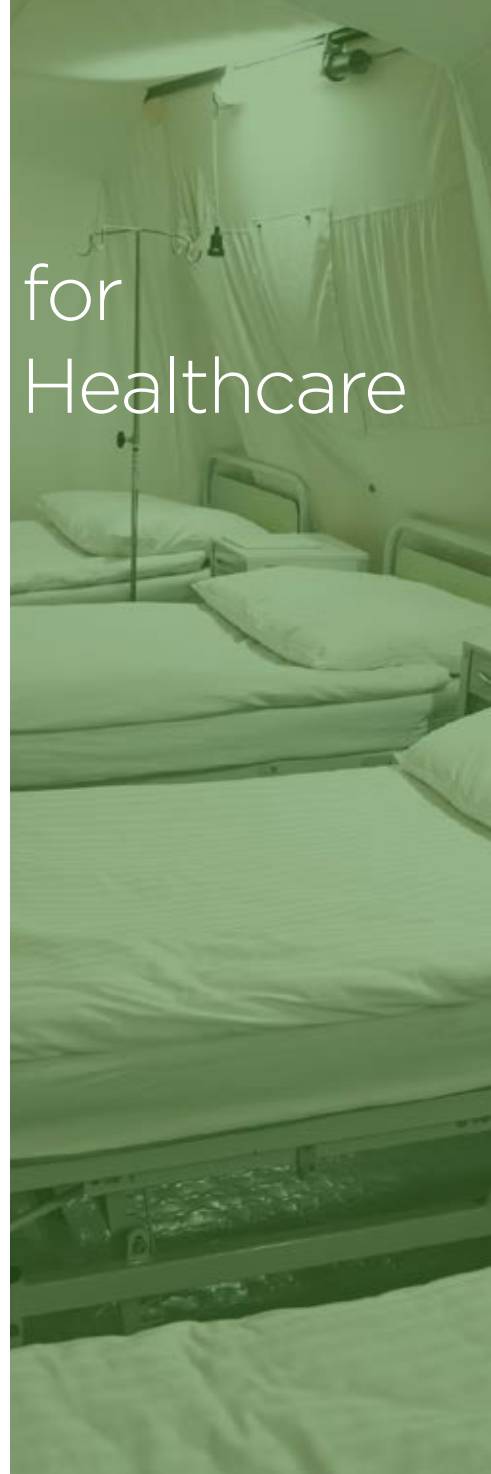


Emergency Preparedness

for
Healthcare



**Delivering reliable emergency datacom
when and where you need it most.**



EMERGENCY

Reliability is Critical

Hubbell Premise Wiring understands what it takes to create end-to-end networking systems that put uptime, collaboration and communication at the forefront while withstanding the unique challenges of healthcare environments.

When hospitals and long-term care organizations have networking solutions they can count on, the focus turns to patient care and efficient workflow—not downtime, disruptions or disconnections. This can make a life-saving difference, especially during times of crisis.

From critical care spaces and outdoor applications to temporary emergency preparedness situations, each networking solution we manufacture for healthcare environments is designed to offer the ultimate in quality, innovation, reliability and compliance.

Our solutions offer a fully integrated system of network cabling and components that exceed all applicable standards for performance and reliability. This level of dependability has made Hubbell Premise Wiring the leader in healthcare networking solutions for decades. We help hospitals and long-term care facilities instantly access power, data, voice and multimedia to keep their systems, technology and medical equipment going.

Hubbell creates reliable connections every time—without interruption.



Critical Care



Patient Care





Table of Contents

RE-BOX® Industrial Enclosure with Cooling	4
Power and Connectivity	5
Copper Cable	6
HI-Impact Solutions	7



Mobile Facilities



Field Hospitals



Administrative

RE-BOX® Industrial Enclosure

Hubbell's Industrial RE-BOX® Enclosure with Cooling product offering allows deployment of network equipment outside of the data center while maintaining an appropriate temperature operating range. High quality manufacturing and installer friendly configurations ensure that equipment is safe from environmental factors and meet the many challenges of outside installations.

- Weather-proof protection and cooling for network switches, PoE devices and equipment deployed outside facility
- Active closed-loop cooling system to maintain equipment operating temperature range
- Keyed locking door compresses gasket to ensure lifetime weather rating



Applications

- Outdoor
- Tented Operations
- Parking Garages



Industrial RE-BOX® Cabinet Configured for Cooling

Mount	Rack Units	Height	Width	Depth	Max Switch Depth	Catalog No.
Vertical	9U	36" (914mm)	24" (610mm)	16" (406mm)	16" (406)	IR3216APG
Horizontal	12U	24" (610mm)	24" (610mm)	24" (610mm)	20" (508)	IR222APG

Air Conditioning Unit for Industrial RE-BOX®

BTU	Height	Width	Depth	Weight	Amp Draw	Catalog No.
3000	21" (533mm)	12" (305mm)	10" (254mm)	54 lb	6	IRAC3
Cover plate for IRAC3						IRPG3

Equipment Shelf

Description	Dimensions	Catalog No.
Solid	2U x 19"W x 14"D	MCCCS19

Floor Mount Kits

Use With	Catalog No.
IR321APG	IRF1812
IR222APG	IRF1224

Cement Anchoring Kit

Description	Catalog No.
4-pack, 3.75" length, 3/8" diameter OD	HPWRRRA



Power and Connectivity

Rack mount power and data panels provide structured, high-density delivery for essential network connection applications. Adding these components to environmentally sealed enclosures provides a complete infrastructure solution for emergency, temporary and remote facilities. The 8-port adapter's fully enclosed shell protects the PCB from contaminants and errant terminations, and allows icons to be installed on each jack port for identification.



- Panels provide NEXT margin over TIA and ISO 11801 channel specifications
- Allows for 1.5A of continuous current per pair
- Universal wiring (T568A or T568B)
- Integrated icon slots for 606-B compliance

Applications

- Industrial Enclosures
- Wall Mount Cabinets
- Tented Operations
- Remote Facilities



NEXTSPEED® Ascent Patch Panels, 19"

Category	24-Port	48-Port
6A	HPJ6A24*	HPJ6A48*
6	HP624	HP648

*Kit: includes 24 black HJU6ABK Cat 6A jacks

HPJ Multimedia Jack Panels, Unloaded, 19"

Type	Ports	RackUnits	Part #
6A	24	1	HPJ24
6	48	2	HPJ48

Power Strip, Horizontal

Description	Catalog No.
15A-120V, NEMA 5-15R	HPWPWR



NEXTSPEED® Ascent Jacks

Category	Catalog No.
6A, COBRA-LOCK Termination	HJU6ABK
6	HXJ6BK

Black; additional colors and 24-packs available

Field Termination Plug

Category	Catalog No.
6A	SP6A
6	SP6



NEXTSPEED® Category 6A Patch Cords

Length	Black	Blue
3ft	HC6ABK03	HC6AB03
10ft	HC6ABK10	HC6AB10

Additional colors, lengths and 24-packs available

NEXTSPEED® Category 6 Patch Cords

Length	Black	Blue
3ft	HC6BK03	HC6B03
10ft	HC6BK10	HC6B10

Additional colors, lengths and 24-packs available



Copper Cable

Hubbell's copper cables are specifically designed and balanced to provide a high-performance, end-to-end system that supports 4PPoE applications. All cables meet performance and budget needs, extending the life span of the infrastructure, which is backed by the Mission Critical® 25-Year Warranty.



- Significant headroom over TIA and IEEE bandwidth and PoE requirements
- Rugged polyolefin jacket and water blocking elements provide durability in demanding environments
- Shielded cable optimizes transmissions and blocks EMI/RFI from medical test equipment

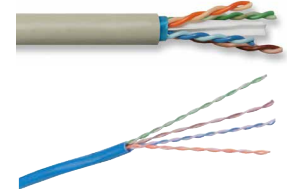
Applications

- 10GBASE-T Gigabit Ethernet
- 1000BASE-T Gigabit Ethernet
- 1000Mbps ATM
- 100BASE-T Ethernet
- Broadband Video



NEXTSPEED® Ascent UTP Standard Cable

Category	Color	NVP	Plenum Spool	Riser Spool
6A	Blue	Plenum 71%, Riser 68%	C6ASPDSB	C6ASRDSB
6A	Yellow	Plenum 71%, Riser 68%	C6ASPDSY	C6ASRDSY
			Plenum REELEX® Box	Riser REELEX® Box
6	Blue	Plenum 70%, Riser 68%	HC6RPEB	HC6RREB
6	Yellow	Plenum 70%, Riser 68%	HC6RPEY	HC6RREY



NEXTSPEED® Ascent FTP Shielded Cable

Category	Color	NVP	Plenum Spool	Riser Spool
6A	Blue	Plenum 70%, Riser 68%	C6AFTSPB	C6AFTSRB
6A	Yellow	Plenum 70%, Riser 68%	C6AFTSPY	C6AFTSRY

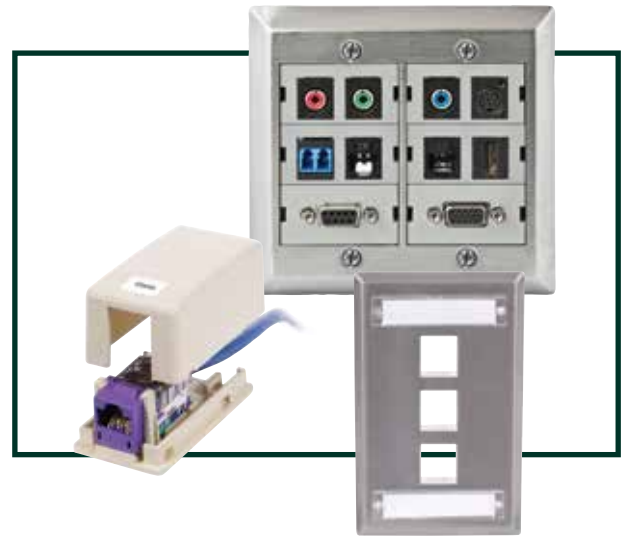


1000 feet; additional colors available

Wallplates and Frames

Hubbell Faceplates and Frames are designed for flush mount applications, accepting Hubbell's extensive line of jacks, snap-fits and AV connectors that snap mount flush into the keystone opening, creating an elegant streamlined look. Stainless steel plates provide an enhanced durability option for high use and abusive environments such as patient rooms, triage, and, administration. Surface boxes bring connectivity to any application where wall access is limited or not available and are perfect for temporary rapid deployments.

- Flush Keystone mounting
- Field configurable
- Integrated labeling



Applications

- Patient Rooms
- Triage Areas
- Laboratories
- Administration
- Field Hospitals

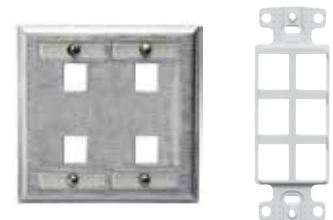


Wallplates with Label Fields

Ports	Stainless Steel	Office White
1	SSFL11	IFP11OW
2	SSFL12	IFP12OW
3	SSFL13	IFP13OW
4	SSFL14	IFP14OW
6	SSFL16	IFP16OW

Decorator Keystone Frames

Ports	White	Blank Adapter
1	NS611W	NS620W
2	NS612W	
3	NS613W	
4	NS614W	
6	NS616W	



Stainless Steel Phone Wallplates

Description	Flush Jack	Recessed Jack
USOC jack, RJ25, 6-position	SPUF	SPUR
Cat 5e jack, RJ45, 8-position	SP5EF	SP5ER
Cat 6 jack, RJ45, 8-position	SP6F	SP6R
10 Gig jack, RJ45, 8-position	SP10GF	SP10GR
Blank plate	P630S1G	

Surface Mount Boxes

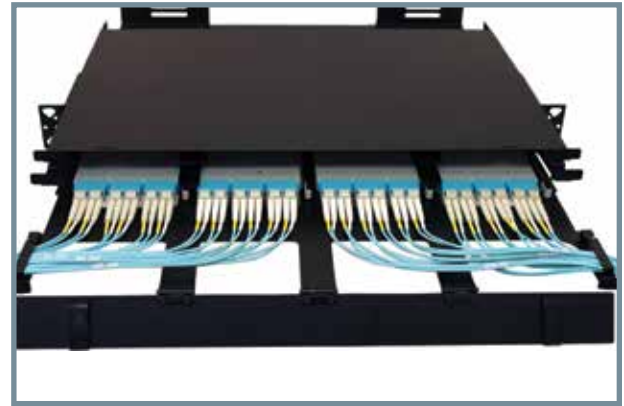
Ports	Office White
1	HSB1OW
2	HSB2OW
4	HSB4OW
6	HSB6OW
12	HSB12OW

Additional colors available



Fiber Optic

Hubbell Premise Wiring's fiber cabling and connectivity products exceed industry standards, maximize bandwidth, and minimize cable congestion. Our fiber channel solutions deliver the bandwidth and reliability needed for mission-critical fiber optic networks. Hubbell's Fiber cabling networks begin with a reliable connectivity solution, from basic field termination to high density, pre-terminated systems.



Fiber Cables

- Gel-free construction for ease of preparation
- Premium, low loss, bend-insensitive fibers
- Bright colored fiber coatings and buffer tubes
- Suitable for outdoor aerial and duct applications

Applications

- Indoor/Outdoor
- Temporary Hospitals
- Triage Areas



FCR Enclosures

Units	Catalog No.
1U	FCR1U3SP
2U	FCR2U6SP

Pre-Polished LC Connectors

	12-Pack
OM3	FCLC900K50GM12
OS2	FCLC900KSM12



FSP Adapter Panels

Strands	OM3 LC MM	OS2 LC SM
6	FSPLCDM3AQ	FSPLCDS3B
12	FSPLCDM6AQ	FSPLCDS6B
24	FSPLCDM12AQ	FSPLCDS12B



HI-Impact

Environmentally sealed remote equipment enclosures provide a secure and protected environment for data communications equipment and patch panels. They enable you to bring data connectivity to the most remote and harsh environments on your network. Combine with Hubbell's high-performance connectivity systems and HI-Impact harsh environment connectors to rapidly connect remote and temporary facilities to your network.

- Enclosures NEMA/EEMAC Types 4, 12 and 13, 4X rated
- IP67 rated HI-Impact connectors and coupler
- Cat6 verified performance



Applications

- Remote Temporary Facilities
- Non-Environmentally Controlled Areas
- Spray/Wash-Down Areas
- Parking Lots and Garages



Consolidation Point Enclosures

Rating	Width Inches (mm)	Depth Inches (mm)	Height Inches (mm)	Catalog No.
NEMA Rated 4X	12" (305)	6" (152)	12" (305)	HICPSS
NEMA Rated 4/12	12" (305)	6" (152)	12" (305)	HICP412G

HI-Impact Copper Panel Mount Connectors

Description	Catalog No.
HI-Impact Category 6 connector (UTP)	HI6
HI-Impact in-line coupler, Category 6	HI6C
Protective cap	HIC

HI-Impact Patch Cords

Description	3 feet	7 feet	10 feet
HI-Impact Cat 6 RJ45 to standard RJ45	HI603AE	HI607AE	HI610AE
HI-Impact Cat 6 RJ45 on both ends	HI603EE	HI607EE	HI610EE
Standard Cat 6 RJ45 on both ends	HI603AA	HI607AA	HI610AA

Additional lengths available



Networking Solutions for Healthcare



Critical Care



Patient Care



Field Hospitals



Administrative



Mobile Facilities

Datacom



QUADCAB



Cable Management



Network Cabinets

Power



Straight Blade Devices



Plugs and Connectors



Twist-Lock® Devices

Hubbell Premise Wiring Product Literature



Full Line Catalog



Cable Management Product Guide



Copper Systems Product Guide

HUBBELL[®]
Premise Wiring

hubbell.com/hubbellpremiawiring/en



HUBBELL CANADA • 870 Brock Road South • Pickering, ON L1W 1Z8

Tel. (905) 839-1138 • Fax (905) 839-9108 Printed in Canada. Specifications subject to change without notice.

H3664 3/20